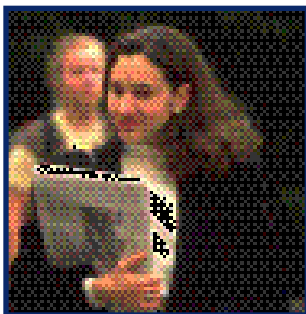


The Georgetown University Master of Arts in Teaching English as a Second Language is part of a premiere linguistics department, recognized for over 50 years for leadership in the fields of second language learning and teaching, analysis of language, and language use in context.



Become part of a tradition of leadership and innovation in the field of second language teaching. Georgetown's MATESL program produces well rounded language teaching professionals who can apply knowledge about language, language learning, and language teaching to pedagogical practice and research, materials and test development, and teacher training in a broad range of changing language teaching environments. Every year, our students present their research at national conferences such as TESOL, AAAL, and SLRF. Our graduates earn prime positions in language teaching, testing, administration and research, nationally and internationally.

GU is part of an active consortium of universities, giving our students access to classes and faculty from 11 institutions, including American University, Gallaudet University, George Washington University, and the University of Maryland at College Park.

Georgetown University is located in Washington, D.C., home of the Center for Applied Linguistics, the national headquarters of the TESOL organization and a thriving international community, all of which offer our students exciting opportunities for internships and positions in language research and teaching. Our Linguistics department has hosted the annual *Georgetown University Roundtable on Languages and Linguistics* since 1948.



For further information, answers to frequently asked questions, and application forms, please visit the department's website:

www.georgetown.edu/departments/linguistics

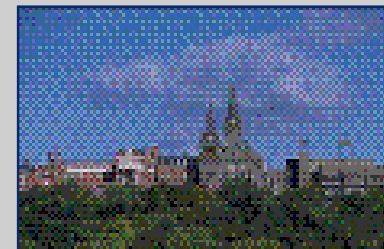
If you have additional questions about the MAT program, contact:

Graduate Program Assistant
Georgetown University
Department of Linguistics
Box 571051
Washington, D.C. 20057-1051
Telephone: (202) 687-5956
Fax: (202) 687-6174
Email: lxgradprog@georgetown.edu

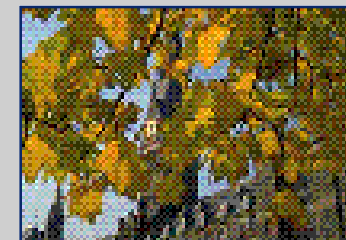
Your Education.

Your Future.

Leadership



Innovation.



Tradition.

Master of Arts in Teaching

Georgetown University

Washington, D.C.

Degree Descriptions

The Master of Arts in Teaching English as a Second Language: 36 credits of coursework, a teaching practicum, and either a teaching portfolio or a master's research paper.

Course work includes:

Linguistic Analysis Core:
Sound, Form, and Meaning.

Applied Linguistics Core:
Language Acquisition, Methodology of Language Teaching, Testing, Teaching Practicum.

Research Core:
Classes in which students design, execute and report a small-scale study.

Electives(Organized in three tracks):
Teacher certification, classroom practices, and research and development.

Master of Arts in Teaching English as a Second Language and Bilingual Education:

This program follows the same curriculum as the M.A. in TESL except that a course in Bilingualism and the Bilingual Education Practicum must be taken.

Scholarships:

A limited number of Department of Education scholarships are available to highly qualified U.S. citizens or U.S. permanent residents. MAT Scholarship students must be full-time students who are planning to work in U.S. (K-12) educational contexts upon graduation. Scholarships provide full tuition remission.

Second Language Acquisition at Georgetown University



The MAT student experience is enriched by Georgetown University's Second Language Acquisition (SLA) Initiative. SLA researchers investigate the processes by which foreign and second languages are learned.

At Georgetown University, a number of departments collaborate to provide students with a comprehensive selection of courses and advising in SLA. Faculty within these departments have a strong commitment to the advancement of the field, and to working closely with students who study and carry out research in SLA.

The Linguistics Department also offers a Ph.D. and an M.S. in Linguistics with an emphasis on Applied Linguistics.

For more information, please visit:

www.georgetown.edu/college/fll/SLA/index.html

Applied Linguistics Faculty

James E. Alatis, Distinguished Professor. Dean Emeritus. Bilingual education; ESL; national language policy; language teaching methodology; English as a world language.

Jeff Connor-Linton, Associate Professor. Language assessment; research design and statistics; L2 writing; multi-dimensional analysis.

Kendall King, Assistant Professor. Ideological, cultural, policy, and socio-linguistic perspectives on second language learning.

Donna Lardiere, Associate Professor. Language acquisition; morphology; syntax.

Alison Mackey, Associate Professor. Second language acquisition; input, interaction and attention in second language learning; task-based teaching; research methodology.

Andrea Tyler, Associate Professor. Cross-cultural discourse analysis and pragmatics; cognitive linguistics; pedagogical grammar; L2 reading/writing.

Associated Applied Linguistics Faculty

Emma Violand-Sanchez, Supervisor, Arlington Public Schools

Heidi Byrnes, Professor, Department of German

Ron Leow, Associate Professor, Department of Spanish and Portuguese

Christina Sanz, Associate Professor, Department of Spanish and Portuguese